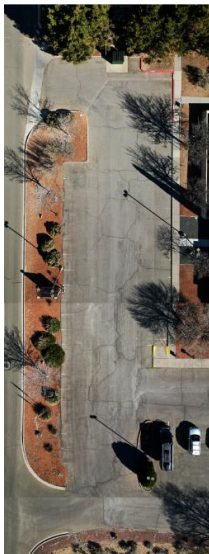




**Capital News**  
**Capital Campaign Committee**  
**May 13, 2024**

**Caring for God's House - Together**



**It's about the  
 Parking Lot!**

**(see the cracks)**

**Parking Lot Update**

We thank all of the church folks who accepted the churchwide invitation and attended the 4 small gatherings in early May, led by the members of the Capital Campaign Committee. And we trust that all the congregation took time to read the *Capital News* published this last week, which showed a photo of the parking lot and included the interview between Mike Bushma and Pastor Kathy. The parking lot is the focus of task at hand!

Here in the spring-summer of 2024 fundraising, we recognize that the initial pledging program did not fulfill the \$400k goal. We have more time in the 3-year project – but we also have more church repairs to do! And we're focused on safety repairs now – in the parking lot and later on the church floor. We don't have enough cash in the bank to complete the parking lot.

Complicating the effort, with the passage of time, we are seeing costs increase! Plus

contractors want to see “cash in the bank” before they will give us a firm estimate. We’re working on \$100k to \$120k as a guesstimate for the cost of the parking lot repair. And we have about half of it now. Wow.... Take a big breath.

The Capital Campaign Committee chose to try **Second Mile Giving through a Match Program** to close the gap. We have seen many non-governmental organizations (NGOs) use this approach to boost giving among their friends, making their dollars more effective.

We didn’t have a corporate partner to rely upon. So we asked some of the congregation to fill that role by creating a Seed Fund of about \$30k with \$1,000 or more individual donations as “Seed”. The goal in this Second Mile is to provide funds to match other gifts from within the congregation. All donors will see their gifts of whatever size be doubled by combining with the Seed Fund. For example, matched, \$10 will become \$20; \$50 becomes \$100 total! If fully subscribed, the \$30K Seed Fund would become \$60K. We hope everyone takes part in whatever level they can financially support. **The Seed Fund commitments are due by May 16, and all gifts — large and small — are due by July 1.** That should give the Project Management Team something to work with!

So if you are not among those creating the Seed Fund, we welcome you to join Second Mile Giving and have your gift doubled! All gifts to the Capital Campaign are welcome! Funds from several support programs like painting, jewelry making, and home repairs have helped so far. Now we are asking for the **Second Mile** – funds that have not been promised to Capital Campaign repairs so far.

*Additional needed church repairs came up within the May small groups discussions. The hearing assistance within the sanctuary doesn’t function anymore and needs to be repaired. We do not know if this will become a capital task or can be handled through Buildings and Grounds Committee. Also, the playground equipment needs repair. It is unusable now because the coating has degraded and can cause injuries.*

The initial plan for the \$400k was to fund enough extra for a capital repair reserves. Costs have gone up in the intervening 1 1/2 years unfortunately.

Pastor Kathy and the Capital Campaign Committee -- Betty, Elaine, Leah, Pat, Denise, Sue, and Bob

---

***Unless the Lord builds the house, the builders labor in vain. Psalm 127:1***  
***Thank you for your support!***

**Rio Rancho Presbyterian Church**

1004 24th Street SE, Rio Rancho, NM 87124 (505) 892-6664  
capital@rioranchopresbyterianchurch.org